



Introducing JaxMP

Network Management for System Center

Stephen Hull
CEO and Founder

www.JaxMP.com

shull@jaxmp.com



Introducing JaxMP



- Founded with focus on simple, comprehensive, and scalable network management using System Center
- Delivers next generation of SNMP network monitoring for SCOM
- Advanced SNMP monitoring easily configurable at device, component, instance, and attribute level

Solutions for SCOM R2

- Network Interface MP
- SNMP Trap Enhancer
- Network Performance Monitoring for Cisco Devices

**Built by and for
Cisco Certified
Professionals**



Cisco ASA Firewalls

Cisco PIX Firewalls

Cisco Catalyst Switch 2950

Cisco Catalyst Switch 2960

Cisco Catalyst Switch 3560

Cisco Catalyst Switch 3750

Cisco Catalyst Switch 4500

Cisco Catalyst Switch 6500

Cisco Wireless Aironet 1231

Cisco Routers 1800 Series

Cisco Routers 1900 Series

Cisco Routers 2800 Series

Cisco Routers 2900 Series

Cisco Routers 3800 Series

Cisco Routers 3900 Series

Cisco Routers 7200 Series

Network Interfaces (IF-MIB & EtherLike-MIB + 64bit counters)

“With Jax Network MPs we can now effectively manage our Cisco devices centrally in SCOM.” stated John Milkard, Director of IT for Sunstar Energy, “Jax makes network monitoring and performance analysis with SCOM easy.”



Network Interface MP



The Network Interface MP provides advanced performance monitoring of any network device interfaces via standard RFCs

- Includes network device ping and TCP port availability check
- Provides standard performance collection rules and state based monitors for errors, 64bit, and interface throughput objects
- Monitoring depth configurable at device, interface, instance, and attribute level

Configure in 3 easy steps:

- Discover device in SCOM
- Add device to MP discovery
- Update interface group with instances

IF-MIB Interface Counters

ifInOctets, ifInUcastPkts, ifInNUcastPkts, ifInDiscards, ifInErrors, ifInUnknownProtos, ifOutOctets, ifOutUcastPkts, ifOutNUcastPkts, ifOutDiscards, ifOutErrors, ifInMulticastPkts, ifInBroadcastPkts, ifOutMulticastPkts, ifOutBroadcastPkts, ifHCInOctets, ifHCInUcastPkts, ifHCInMulticastPkts, ifHCInBroadcastPkts, ifHCOctets, ifHCOUcastPkts, ifHCOmulticastPkts, ifHCOBroadcastPkts

Etherlike-MIB Interface Counters

dot3StatsAlignmentErrors, dot3StatsCarrierSenseErrors, dot3StatsDeferredTransmissions, dot3StatsDuplexStatus, dot3StatsEtherChipSet, dot3StatsExcessiveCollisions, dot3StatsFCSErrors, dot3StatsFrameTooLongs, dot3StatsInternalMacReceiveErrors, dot3StatsInternalMacTransmitErrors, dot3StatsLateCollisions, dot3StatsMultipleCollisionFrames, dot3StatsRateControlAbility, dot3StatsRateControlStatus, dot3StatsSingleCollisionFrames, dot3StatsSQETestErrors, dot3StatsSymbolErrors,



SNMP Trap Enhancer

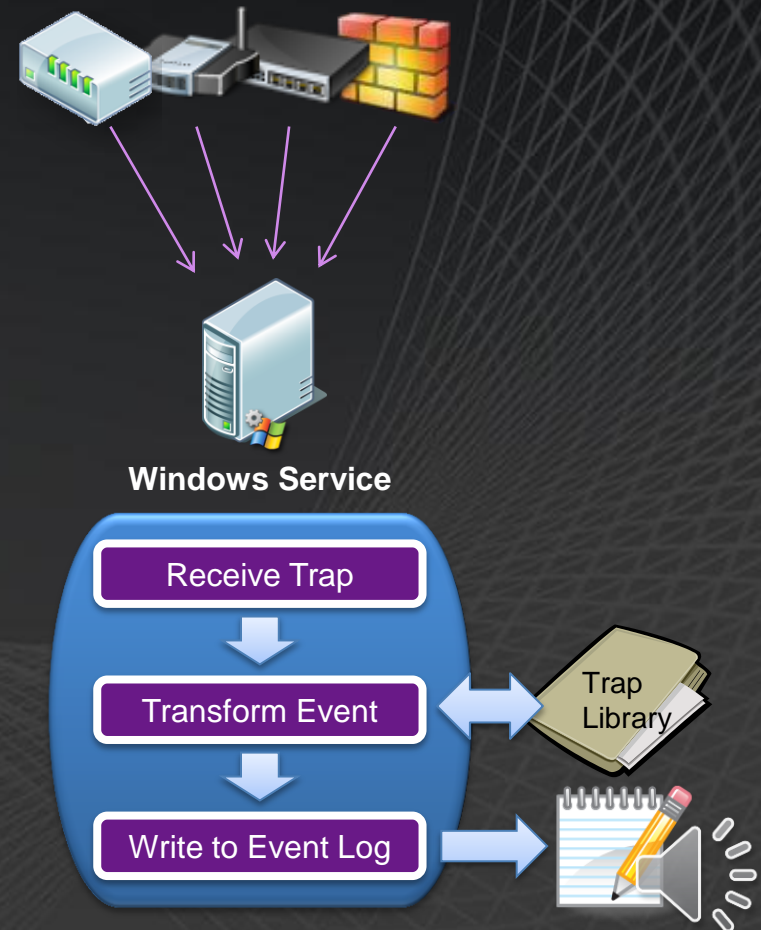


The SNMP Trap Enhancer acts as a central gateway to translate raw event messages and write them to a local Windows event log

- Deployed as Windows service
- Support for over 100 MIBs including all Cisco devices
- Translates event strings and raw data to text values; extensible
- Includes SCOM MP for monitoring windows service plus collecting and alerting on traps
- Log SNMP traps to the Windows application log, a remote syslog server, and/or the SCOM DW

Getting Started

- Install and enable Windows Service
- Configure devices to forward events
- Deploy MP and configure alerting



Network Performance Monitoring for Cisco Devices



- Provide comprehensive easy to use network device model specific monitoring within SCOM
- Extends SCOM heartbeat to include network device ping and TCP port availability check
- Includes advanced SNMP discoveries that translate cryptic statuses and codes to text
- Performance monitoring easily configurable at group, device, component, instance, and attribute levels
- Hundreds of monitoring rules covering complete vendor MIB; includes standard best practice overrides for rapid deployment

Detail View

JaxMP Cisco Catalyst 2950 Chassis properties of Cisco Catalyst 2950 Switch Chassis	
Name	Cisco Catalyst 2950 Switch Chassis
Path name	Cisco Catalyst 2950 Switch Chassis
Serial Number	FH40711Y03J
Chassis Minor Version	H0
Model Number	WS-C2950-12
Hostname	SN-2950-12
Domain Name	stephen.com
Cisco IOS Version	12.1(12c)EA1
Boot Path	flash:/c2950-6q4l2-mz.121-12c.EA1.bin
Reason for Device Reload	power-on
NVRAM Size	32768
Memory Size	21506592
Flash Memory Size	7741440
Flash Memory Card Type	Onboard system FLASH
IP Address	192.168.1.152
Device Name	SN-2950-12.stephen.com
Device Description	Cisco Internetwork Operating System Software IOS (tr 24-Nov-02 23:31 by antonio
Device Contact	me
Device Location	swh
Device OID	1.3.6.1.4.1.9.1.323
Community String	cAB1AGIAbABpAGMA
SNMP Version	2

Over 300 unique device models already supported

Cisco ASA Firewalls
Cisco PIX Firewalls
Cisco Catalyst Switch 2950
Cisco Catalyst Switch 2960
Cisco Catalyst Switch 3560
Cisco Catalyst Switch 3750
Cisco Catalyst Switch 4500
Cisco Catalyst Switch 6500







Cisco Wireless Aironet 1231
Cisco Routers 1800 Series
Cisco Routers 1900 Series
Cisco Routers 2800 Series
Cisco Routers 2900 Series
Cisco Routers 3800 Series
Cisco Routers 3900 Series
Cisco Routers 7200 Series



Licensing Overview

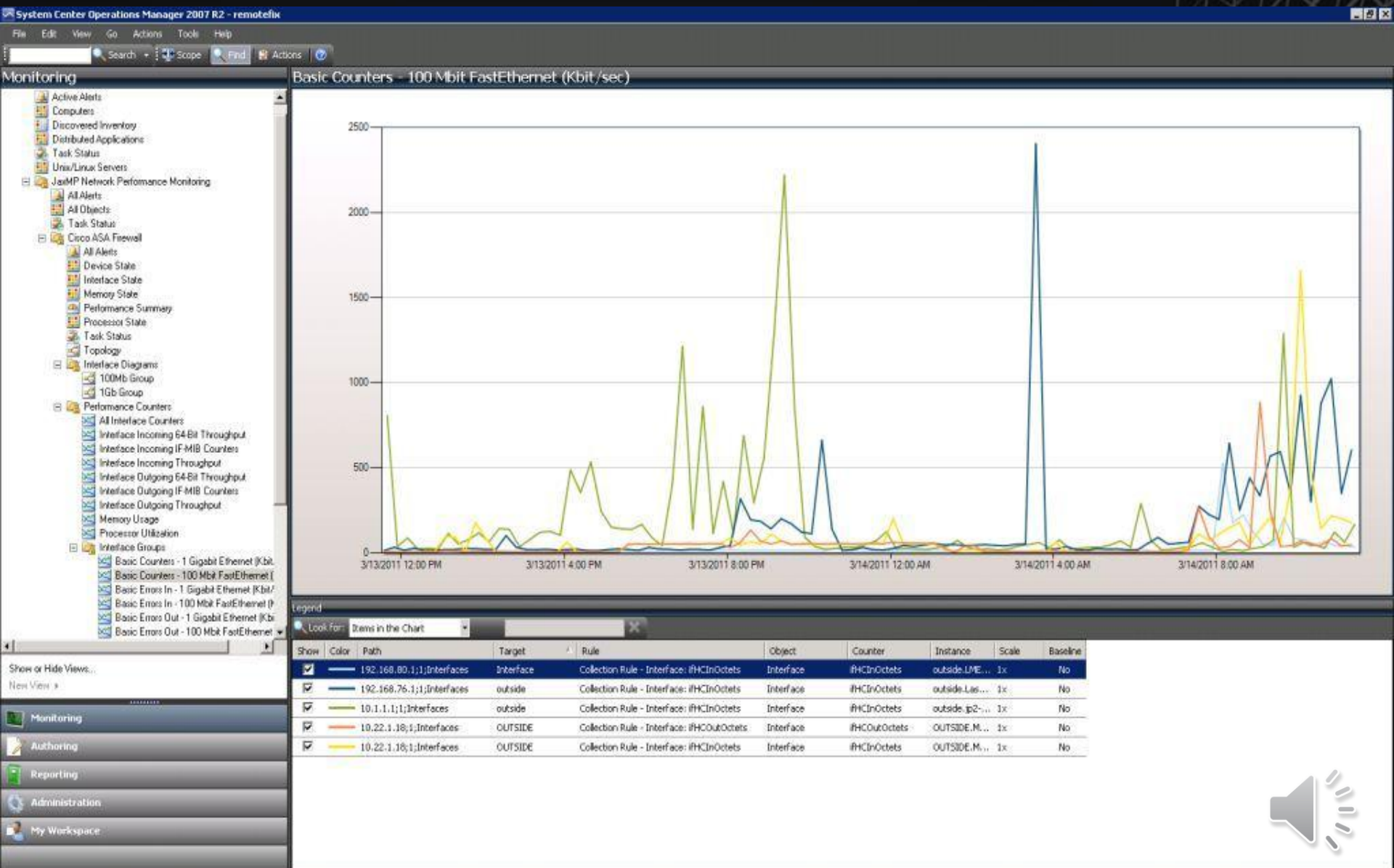


Start network monitoring for less than \$500.00 with the Network Interface MP

Solution	per	Description
 Network Interface MP	Interface Bundle	Generic monitoring of network device interfaces based on RFC standards
 SNMP Trap Enhancer	Instance	Centrally collect and transform SNMP traps into usable events
 NPM for Cisco Devices	Device	Network Performance Monitoring for Cisco firewalls, routers, switches, and wireless
 Network Essentials	Bundle	Network Interface MP, SNMP Trap Enhancer, and 10 devices
 Network Professional	Bundle	Network Interface MP, SNMP Trap Enhancer, and 25 devices
 Software Assurance	Annual	Annual cost based on total licensing for product updates and support

Need more NPM coverage? Ask us about our optional certification services for new vendors and devices

Network Performance



Network Health &



Configuration

Name	Cisco Catalyst 2950 Switch Chassis
Path name	Cisco Catalyst 2950 Switch Chassis
Serial Number	PHK0711Y0JJ
Chassis Minor Version	H0
Model Number	WS-C2950-12
Hostname	SN-2950-12
Domain Name	stephen.com
Cisco IOS Version	12.1(12c)EA1
Boot Path	flash:/c2950-ksq4l2-mz.121-12c.EA1.bin
Reason for Device Reload	power-on
NVRAM Size	32768
Memory Size	21506592
Flash Memory Size	7741440
Flash Memory Card Type	Onboard system FLASH
IP Address	192.168.1.152
Device Name	SN-2950-12.stephen.com
Device Description	Cisco Internetwork Operating System Software IOS (tr 24-Nov-02 23:31 by antonino
Device Contact	me
Device Location	swh
Device OID	1.3.6.1.4.1.9.1.323
Community String	cA81AGIAbABpAGMA
SNMP Version	2



Network Discovery

